

# BORA

PORTLAND PUBLIC SCHOOLS AND PORTLAND PARKS & RECREATION

## Grant Bowl Master Plan



Community Engagement 2  
December 3, 2019



PORTLAND PARKS  
& RECREATION

Healthy Parks, Healthy Portland

CAMERON  
McCARTHY

LANDSCAPE ARCHITECTURE & PLANNING

# AGENDA

**Advisory Group Opening Remarks** 0:20

**Project Overview** 0:05

**What We Heard** 0:05

**Site Analysis** 0:05

**Meeting Station Overview** 0:10

Field Layouts

Grandstands

Support Buildings

Access and Security

Scoreboards and Lighting

**Meeting Stations** 1:15

# Project Overview: History, Scope and Schedule



# GRANT BOWL









## SCOPE OF IMPROVEMENTS

**Bring GHS softball back to Grant Park**

**Host GHS athletics home games on site**

**Regulation GHS softball field**

**Spectator seating ~1500**

Including a pressbox

**Field lighting**

**Fencing for safety and security**

Accessible pathways to the bowl

**Concessions**

**Restrooms**

For use during events

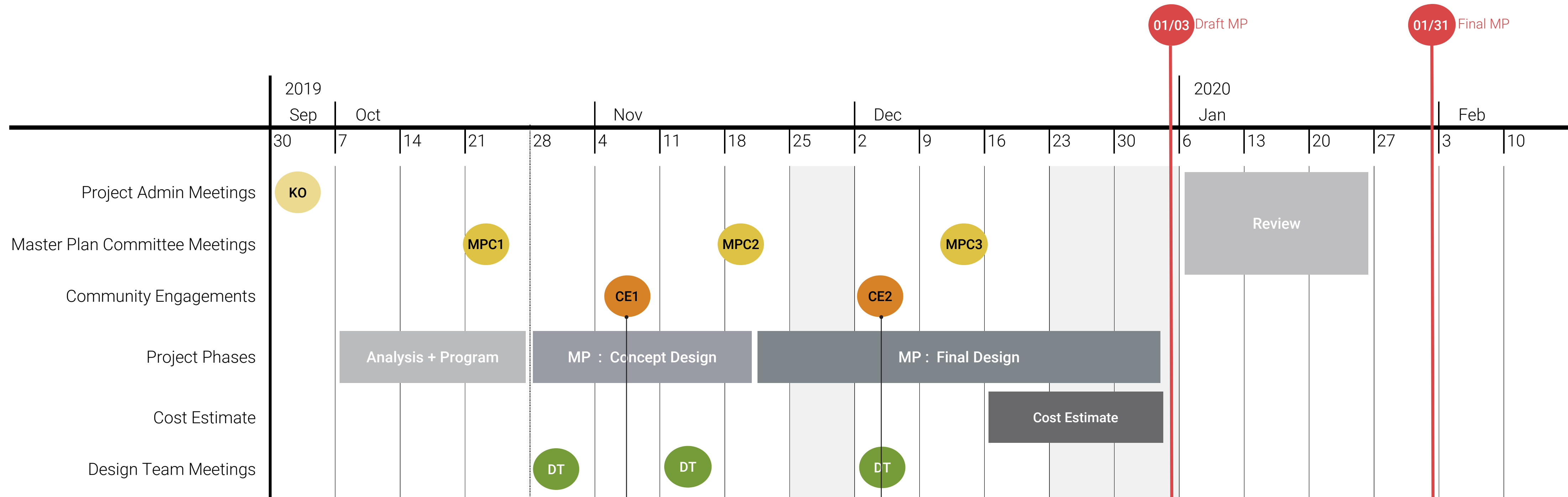
**Ticketing**

**Storage**

Athletic & maintenance equipment storage



# SCHEDULE



## Community Engagement

Listening Session  
November 6, 2019

## Community Open House

Feedback and Design Proposal  
December 3, 2019



**1. Provide equitable facilities for GHS and community athletes.**

- A. Create regulation high school softball field equitable to new baseball field.
- B. Bring athletic facilities at GHS into closer alignment with comparable high schools in Portland and the state.

**2. Build community through athletics.**

- A. Create an atmosphere of support for athletes by hosting games and events on site.
- B. Schedule games and events in evening to allow more opportunity for community participation.
- C. Minimize dispersion of athletic events to remote facilities.

**3. Expand the usability of the Bowl.**

- A. Add field and track lighting to extend hours of use into evening.
- B. Build upon the 2013 investment in Bowl improvements.
- C. Add spectator seating and related amenity facilities to better support games and community events.

**4. Increase safety of athletes, spectators and community.**

- A. Include crowd management features that control access to the Bowl during ticketed events.
- B. Provide lighting of track for community use in early morning and evening.
- C. Reduce vandalism by adding more activity to the Bowl.
- D. Improve accessibility to track and field level and reduce safety hazard of grass slopes.
- E. Minimize conflicts between different uses, especially during simultaneous activities.



# WHAT WE HEARD COMMUNITY ENGAGEMENT MEETING 1

## GRANDSTAND SEATING



## GRANDSTAND SEATING



Freestanding, metal bench bleachers



Integrated, concrete platform seating along slope

## GRANDSTAND SEATING



Jefferson High School



Roosevelt High School



Pressbox



# WHAT WE HEARD COMMUNITY ENGAGEMENT MEETING 1

## ACCESS AND SECURITY



## ACCESS AND SECURITY





# WHAT WE HEARD COMMUNITY ENGAGEMENT MEETING 1

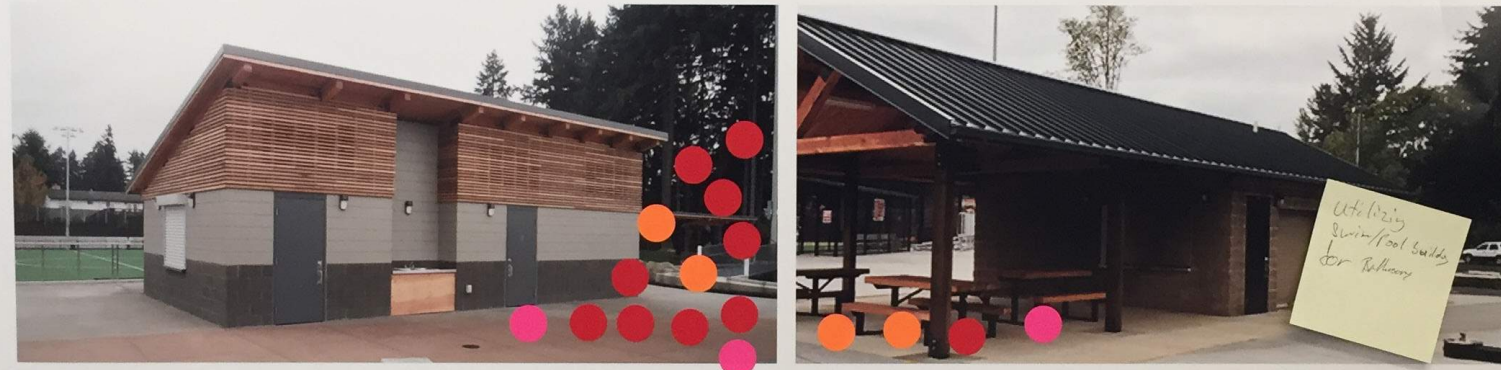
SUPPORT FACILITIES CONCESSIONS, TICKETS, TOILETS, STORAGE

## Where might amenities go?



NEW  
BASEBALL  
& SOCCER  
FIELD

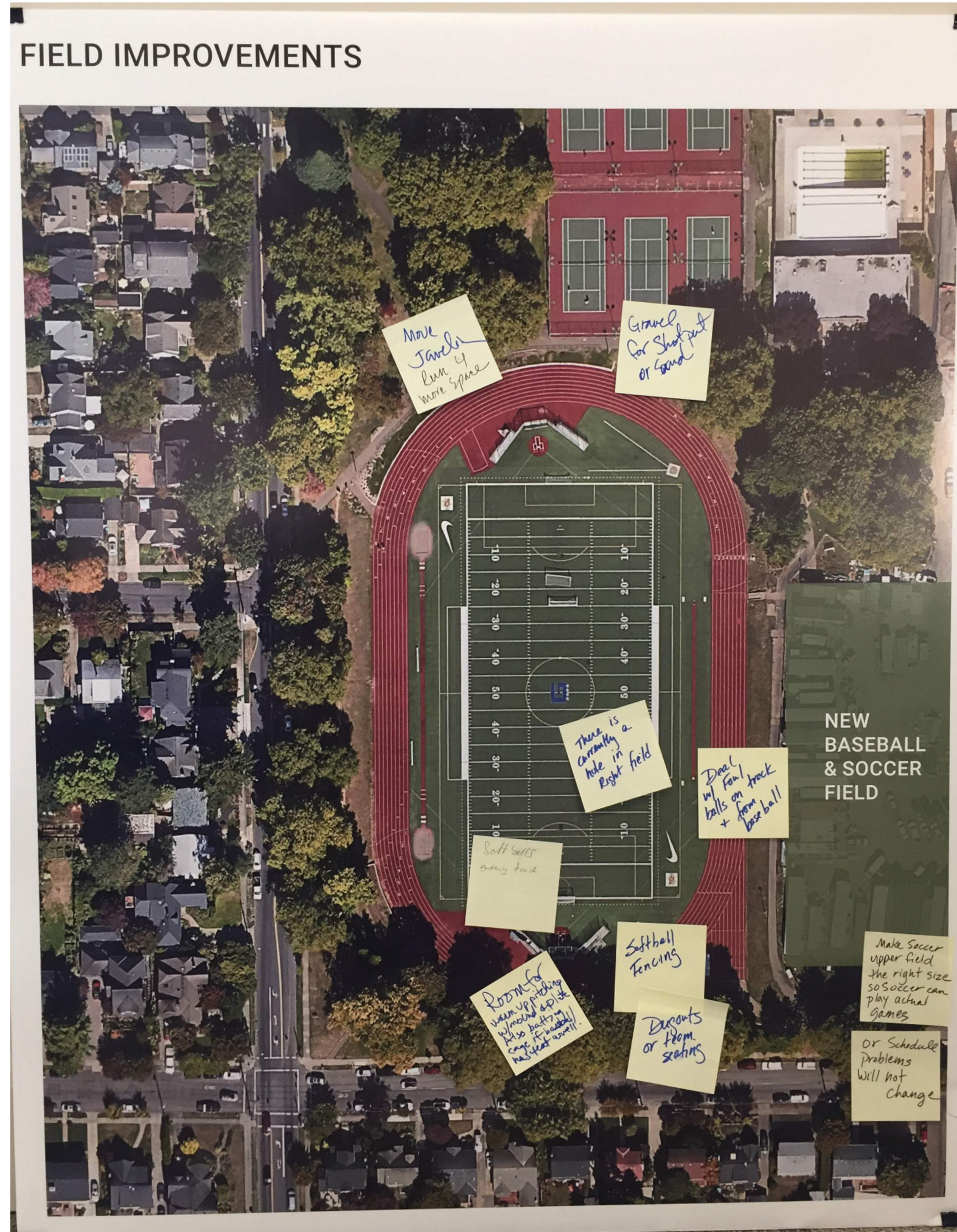
### SUPPORT FACILITIES



Freestanding park support buildings



# WHAT WE HEARD COMMUNITY ENGAGEMENT MEETING 1





# WHAT WE HEARD COMMUNITY ENGAGEMENT MEETING 1

What is your primary **concern** regarding Grant Bowl (PARK) improvements? *(not just bus)*

- \* Sound
- \* Hours of operation
- \* Property Values ↓ (maximize)
- \* Shared use Agreement PPR/PPS
  - \* Not phrasable -
  - \* Not getting it done timely, or at all. ~~TAKES TOO LONG~~
  - \* Low impact - not losing trees and green space
- \* How to balance security & Access
  - when are lights on/off?
- \* Loss of community access during non-school functions \*
- \* PARKING - where?
- \* Overuse by PARKS USERS (LIGHTS!)
- \* Crowded streets/ Congestion
- \* TRASH (after games)
  - \* Softball gets compromised / striping
  - \* Vandalism/ graffiti (cameras?)
- \* Perfect not the enemy of the good.
- \* Who gets to use it & when?

What is your biggest **hope** for project success?

- \* Lights ASAP (use & security) *me too!*
- \* Faster - Expedited \*
- \* Property Values ↑
- \* Move forward / not backwards
- \* Host Home events \*\*\* Very important
  - \* Seating (safe/durable/accessible) comfortable
  - \* Maximize use of space for everyone (LIGHTS)
- \* Create a community hub for the neighborhood - not just the city
- \* Not all about one sport (Football) \*
- \* Serves All sports & interests
- \* Hollywood is part of the plan
  - Pool is part of master plan (concessions, etc)
- \* Private donors step up
- \* Can be done in parts (lights first)

## Hopes

1. Maximize use by adding lights
2. Process moves along as fast as possible
3. Make a community hub with broad appeal
4. Host events with safe accessible seating
5. Private donors step forward
6. Increase in property values

## Concerns

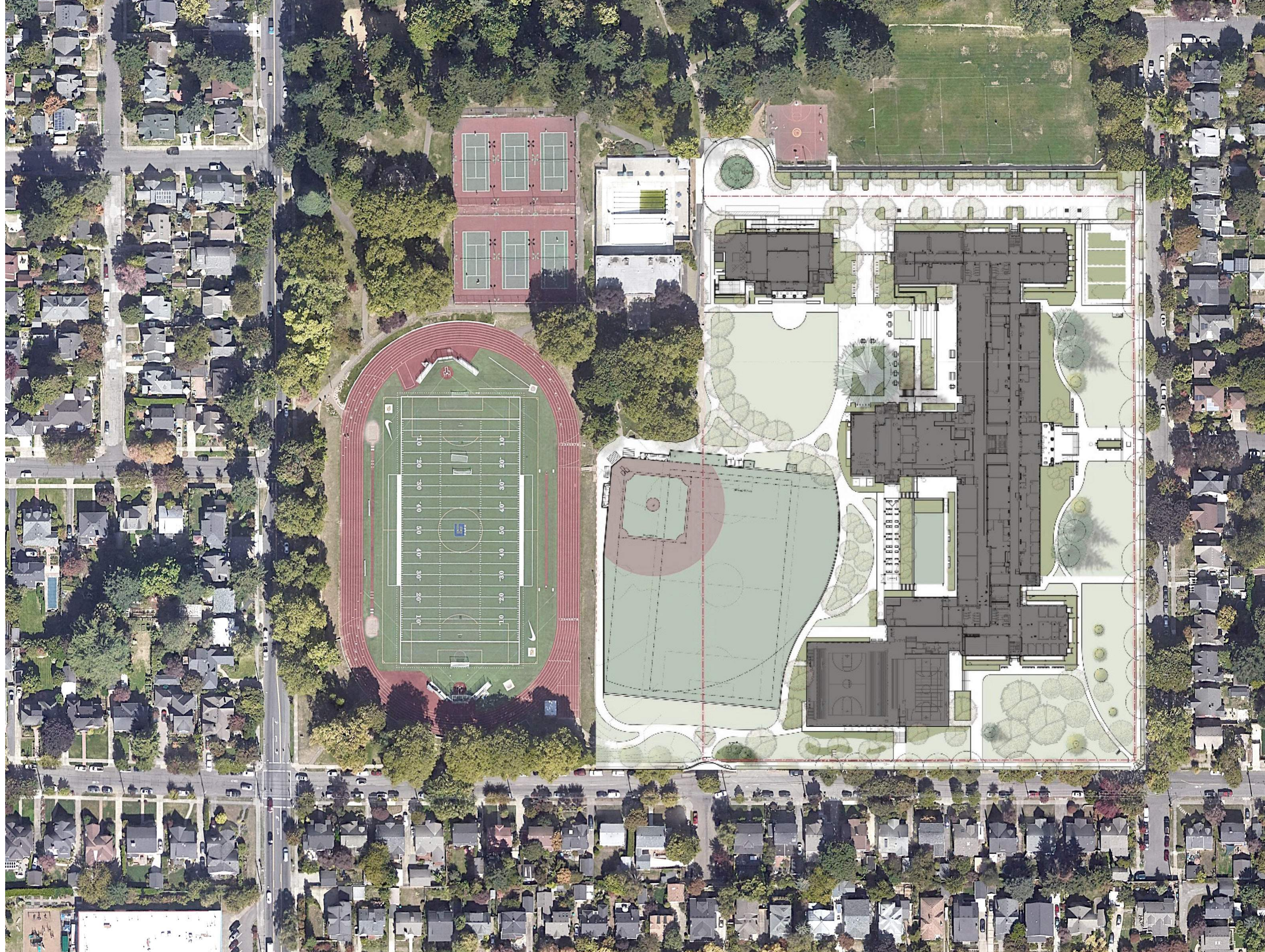
1. Traffic congestion and parking scarcity
2. Maintaining community access
3. Increase in noise
4. Loss of trees and open space in the park
5. Overuse of the park and field
6. Lack of agreement between PPS & Parks
7. Process takes too long
8. Hours of operation
9. Loss of property values



# Site Analysis



# SITE ANALYSIS



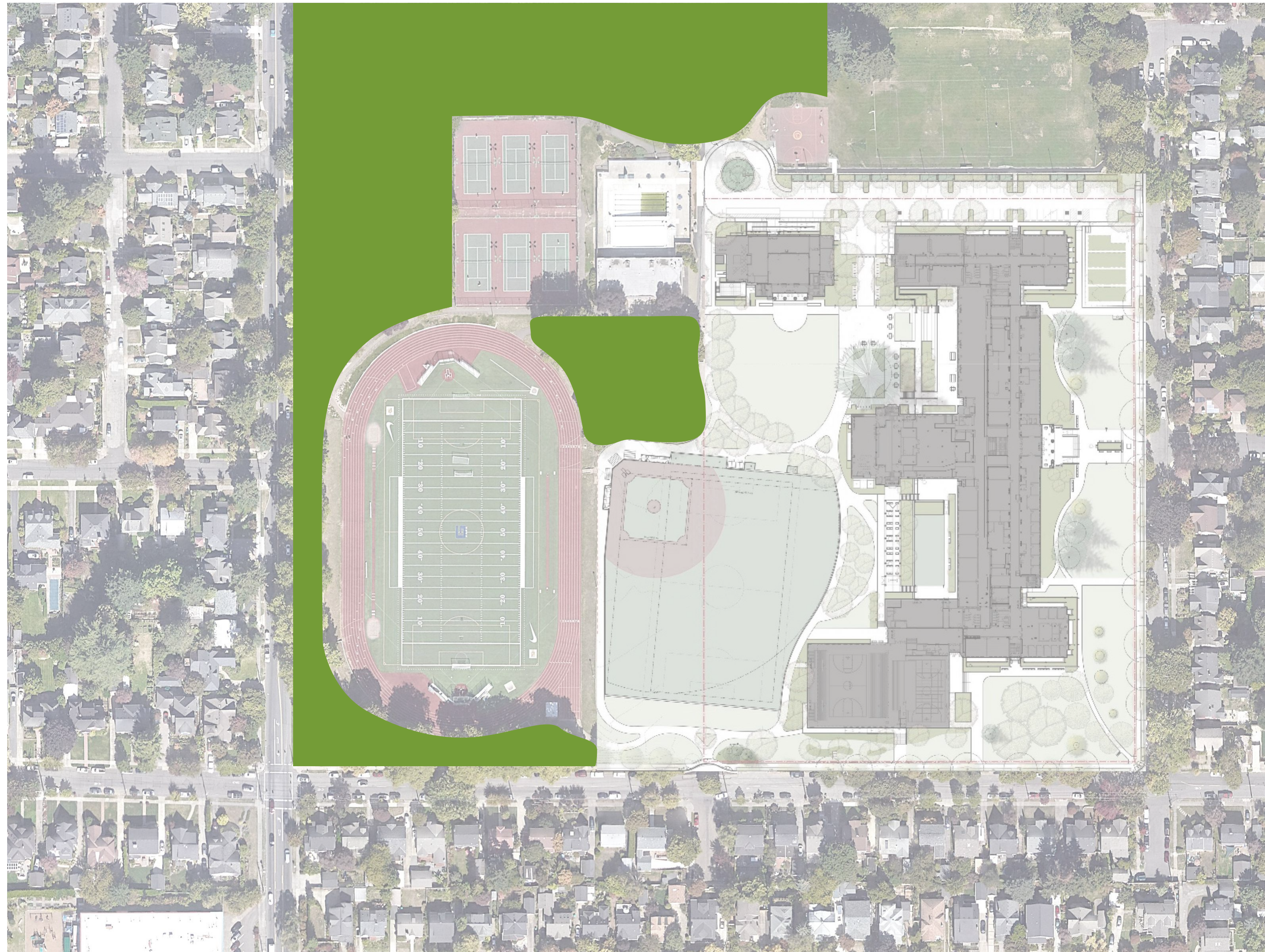


# GRANT PARK CHARACTER



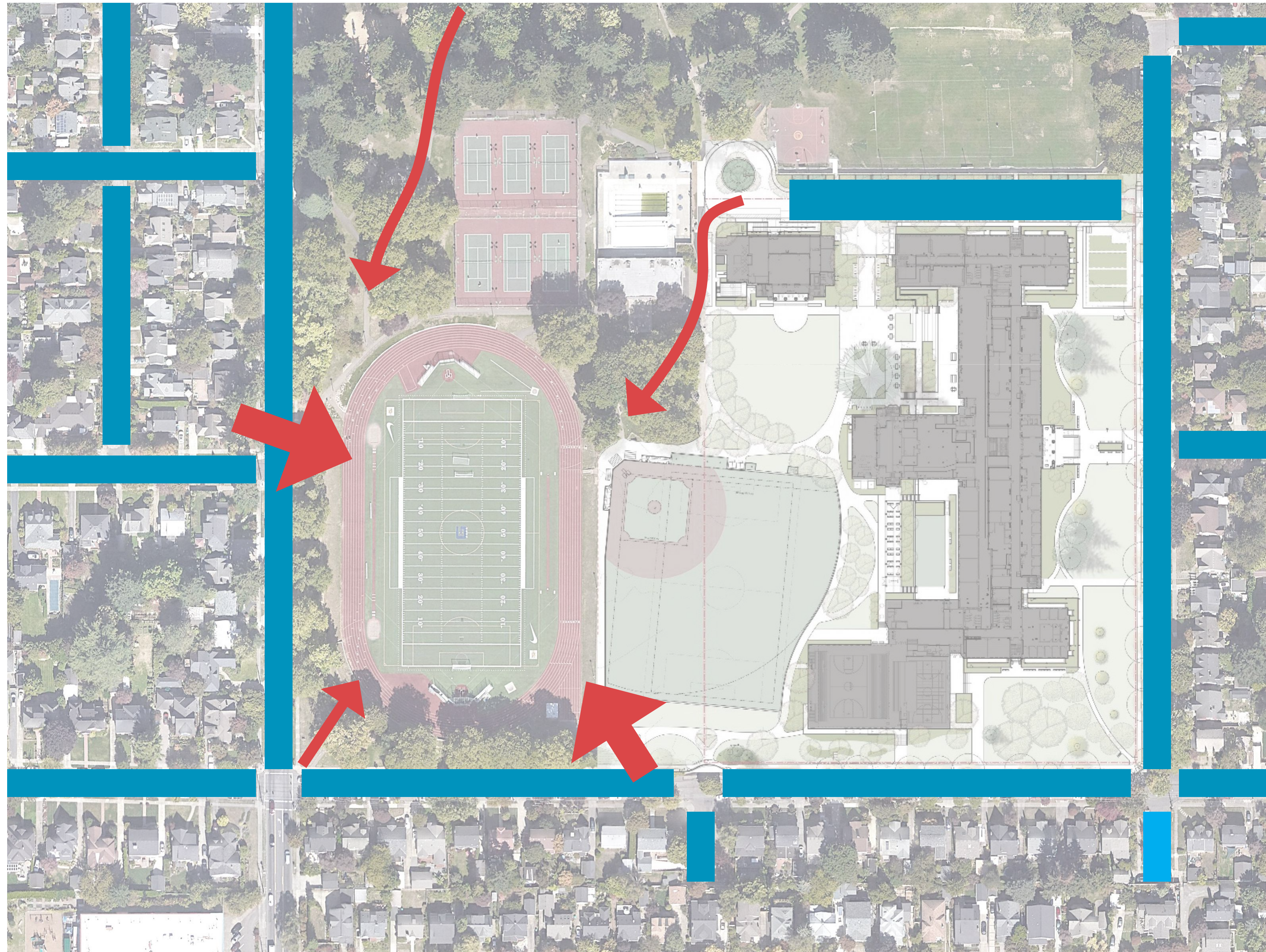


# PARK TREE CANOPY





# PARKING SITE APPROACH



The 2017 Traffic Impact Analysis by DKS indicates parking demand is greater during the typical school day than it is for evening basketball or theater events.



# GRANT HIGH SCHOOL EVENTS

Event	Number of events per year	Number of attendees	Currently held at Grant Y/N	Notes:
Boy's varsity soccer	7	200	some	Daylight dependent
Girl's varsity soccer	7	200	some	Daylight dependent
Cross Country	2	<b>1000*</b>	Y	*Including participants
Track and Field	3	<b>2000* for meets, 3000* for Cotton</b>	Y	*Including participants
Softball	14	100	N	
Varsity Football	5	<b>1500</b>	N	
JV Football	5	200	N	
Boy's Varsity Basketball	12	<b>1000</b>	Y	
Boy's JV Basketball	12	100	Y	
Boy's JV2 Basketball	12	100	Y	
Girl's Varsity Basketball	12	300	Y	
Girl's JV Basketball	12	100	Y	
Girl's JV2 Basketball	12	100	Y	
Eight Grade Information Night	1	<b>2000</b>	Y	
Back to School night	1	<b>2000</b>	Y	
Grantasia	1	<b>1800</b>	Y	
Theater Performances	2	<b>1000*</b>	Y	*Including participants
Band Concerts	2	<b>1000*</b>	Y	*Including participants
Choir Concerts	2	<b>1000*</b>	Y	*Including participants
Dance performances	3	<b>1000*</b>	Y	*Including participants

Currently, there are approximately **29 events** per year at Grant High School that draw 1000 or more people.

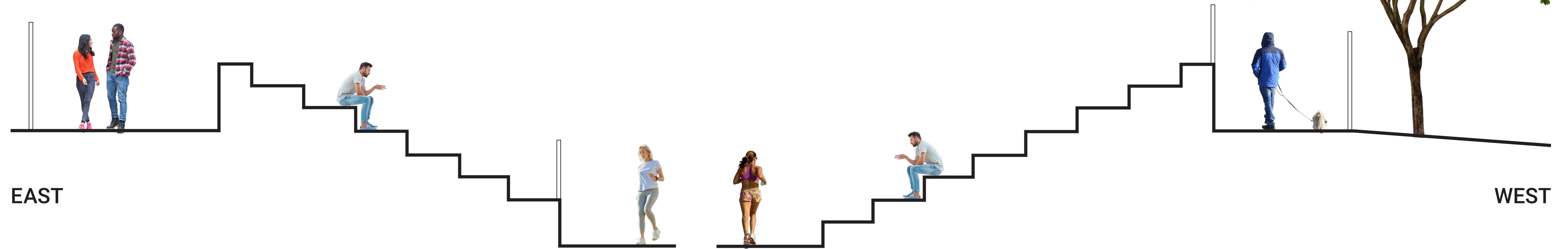
The proposed improvements to Grant Bowl would add **5 new** events of that scale per year.



# Meeting Station Overview

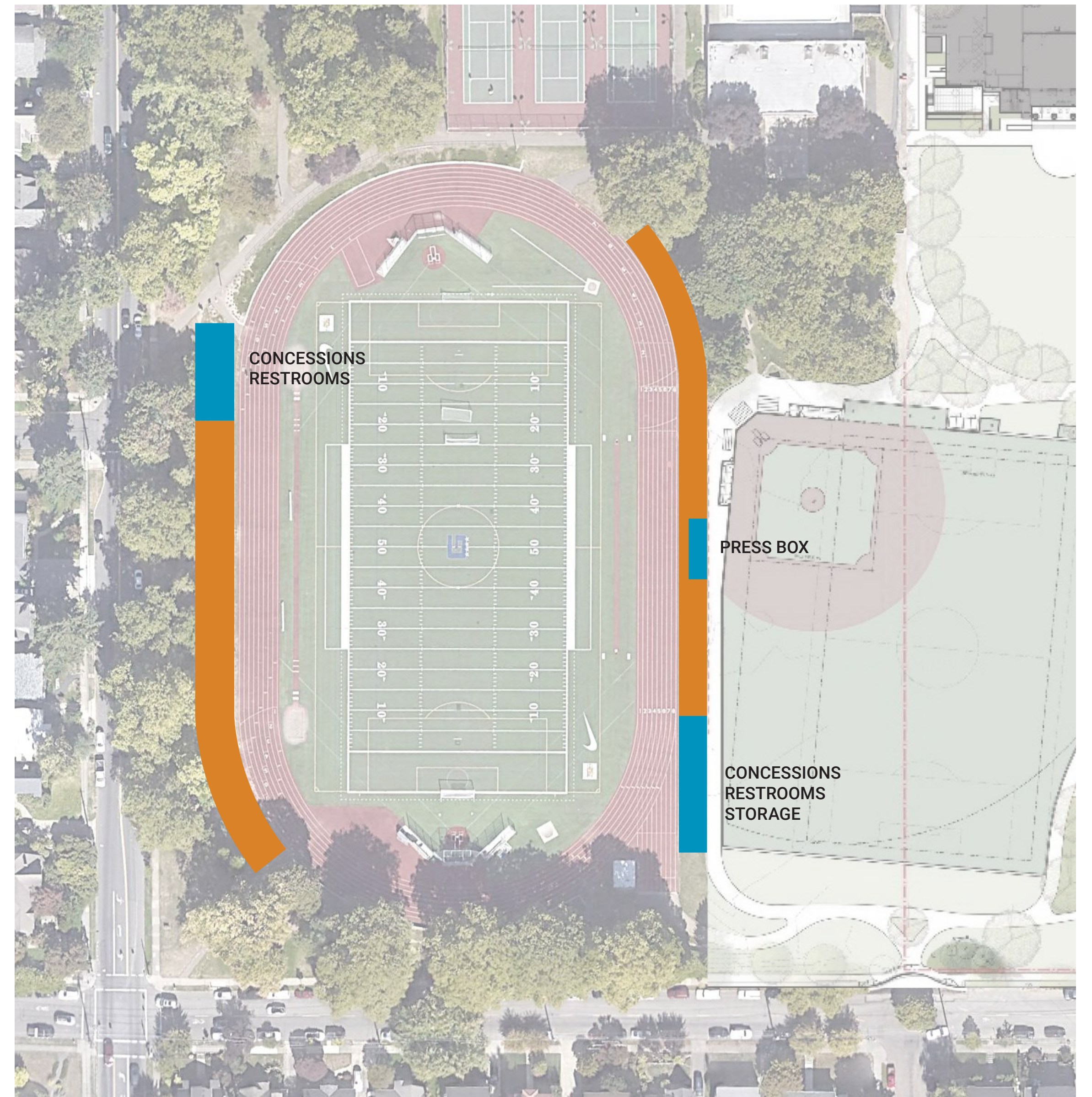
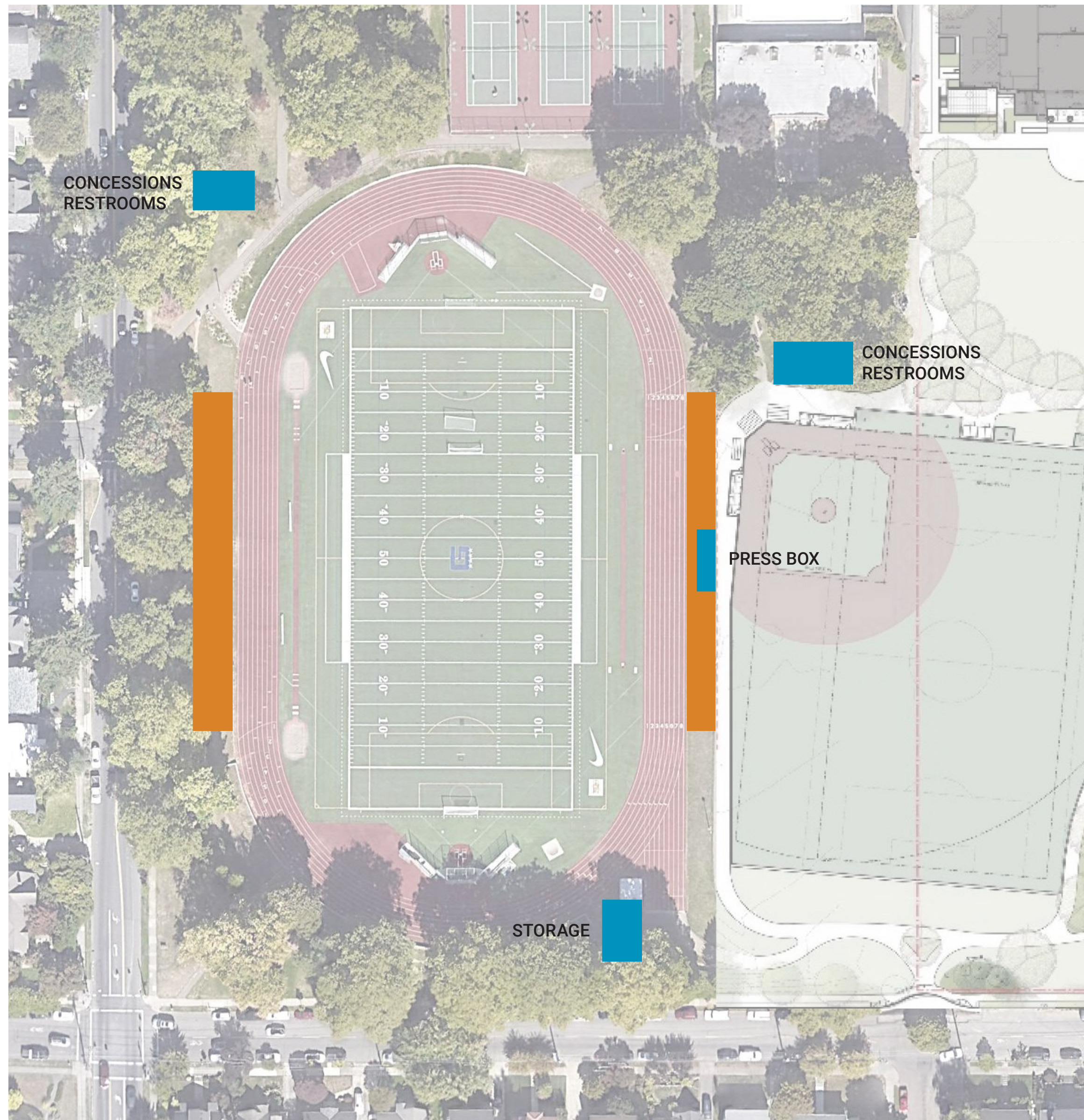


# GRANDSTANDS



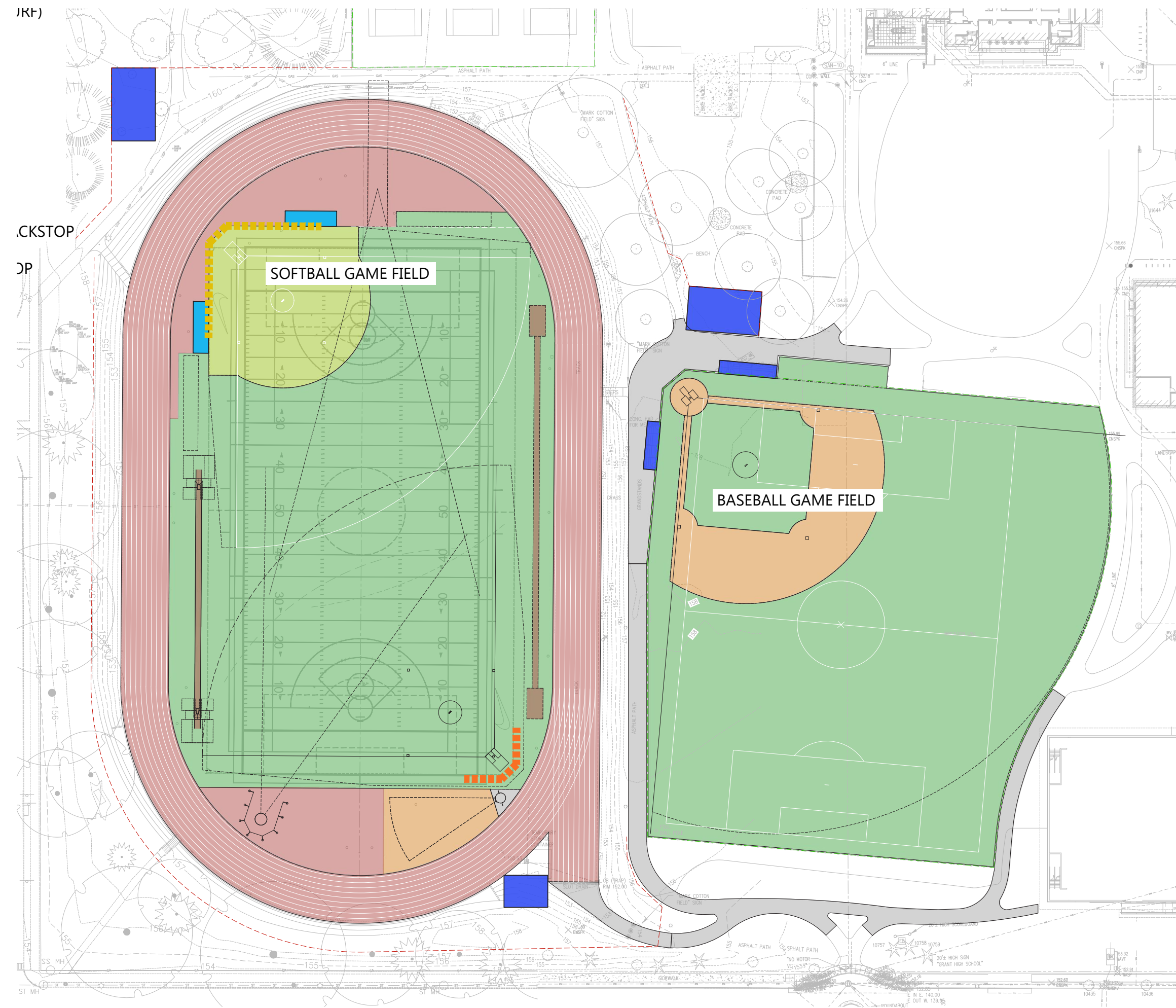


# STADIUM SUPPORT BUILDINGS

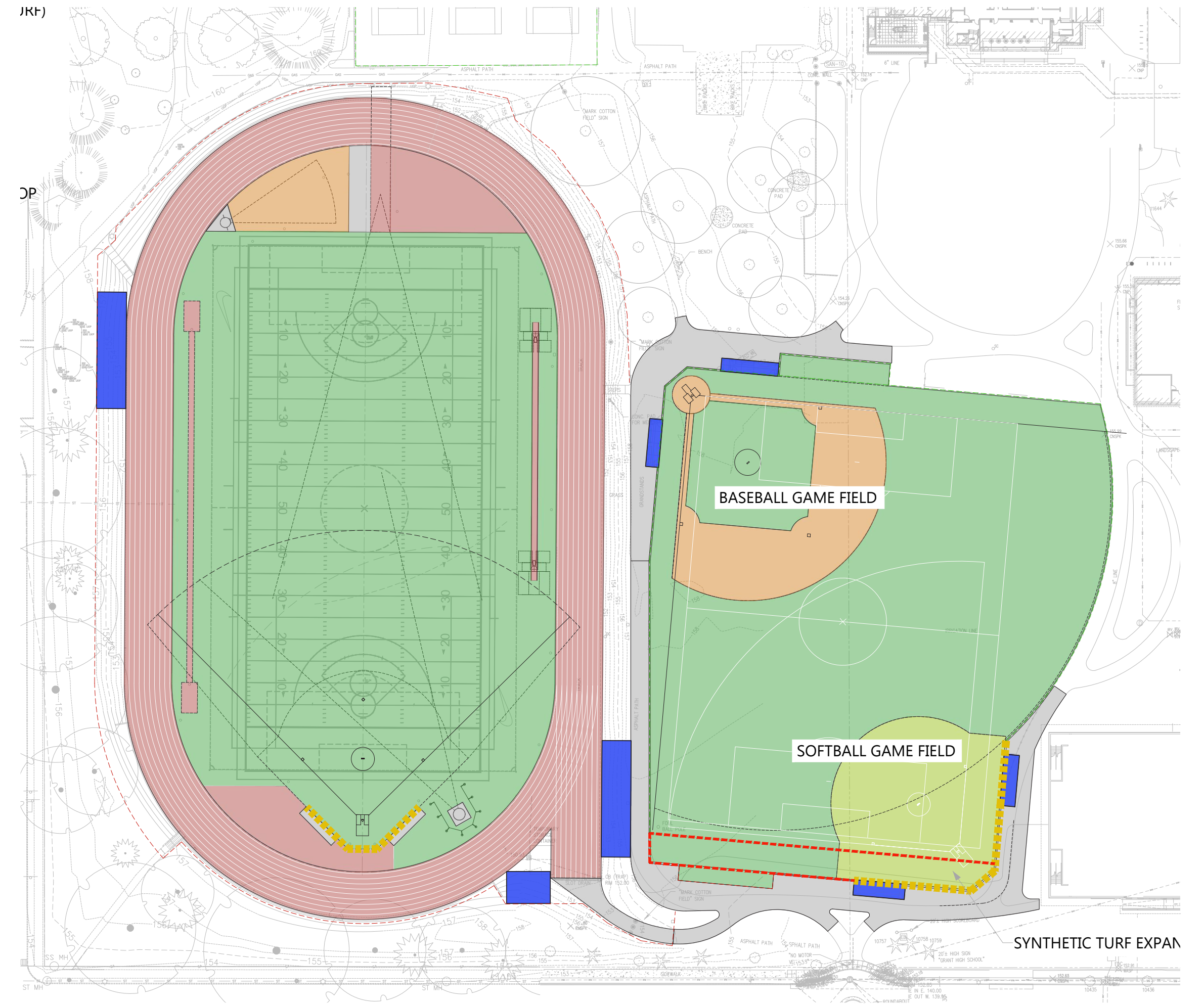




# FIELD IMPROVEMENTS



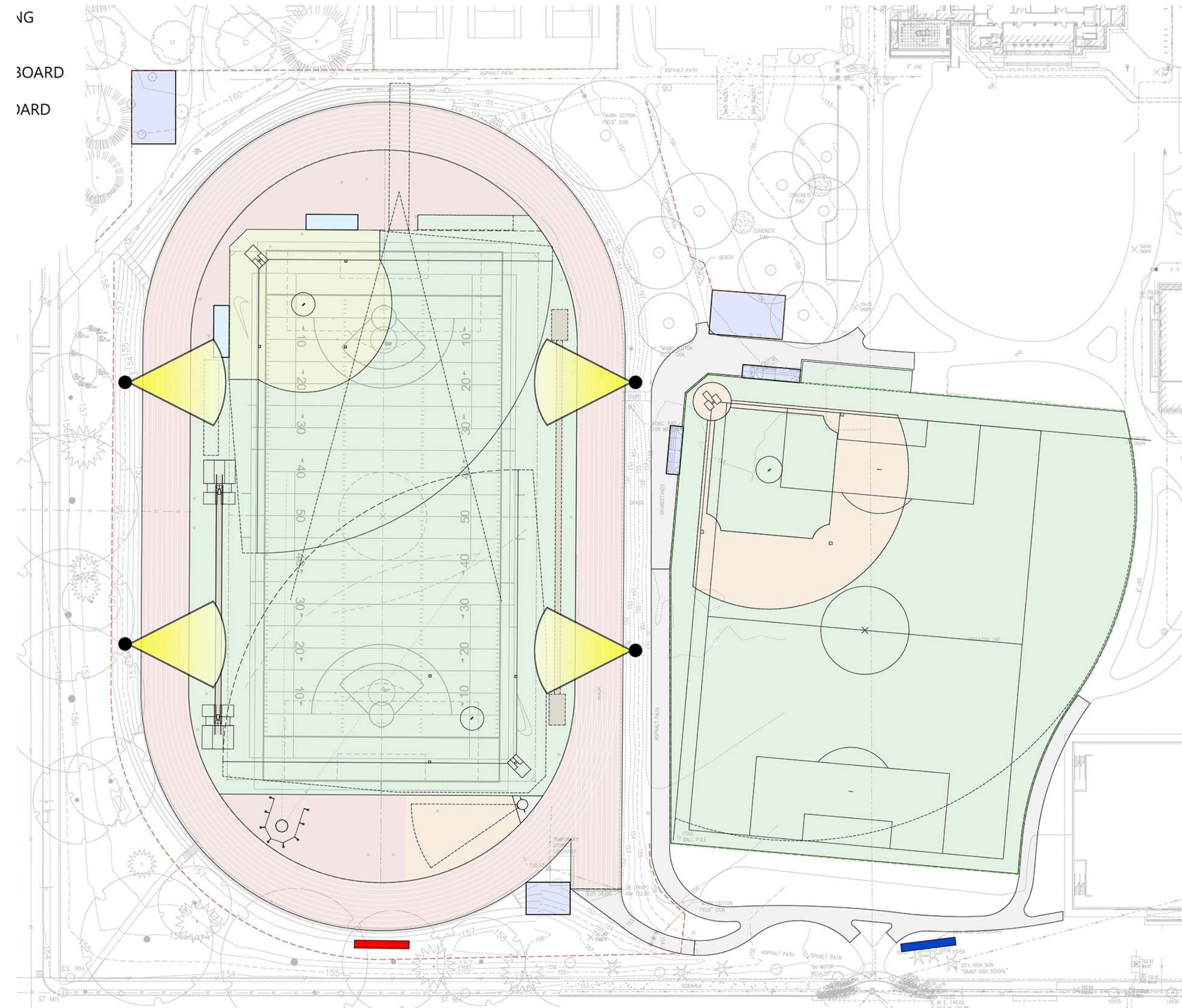
OPTION A



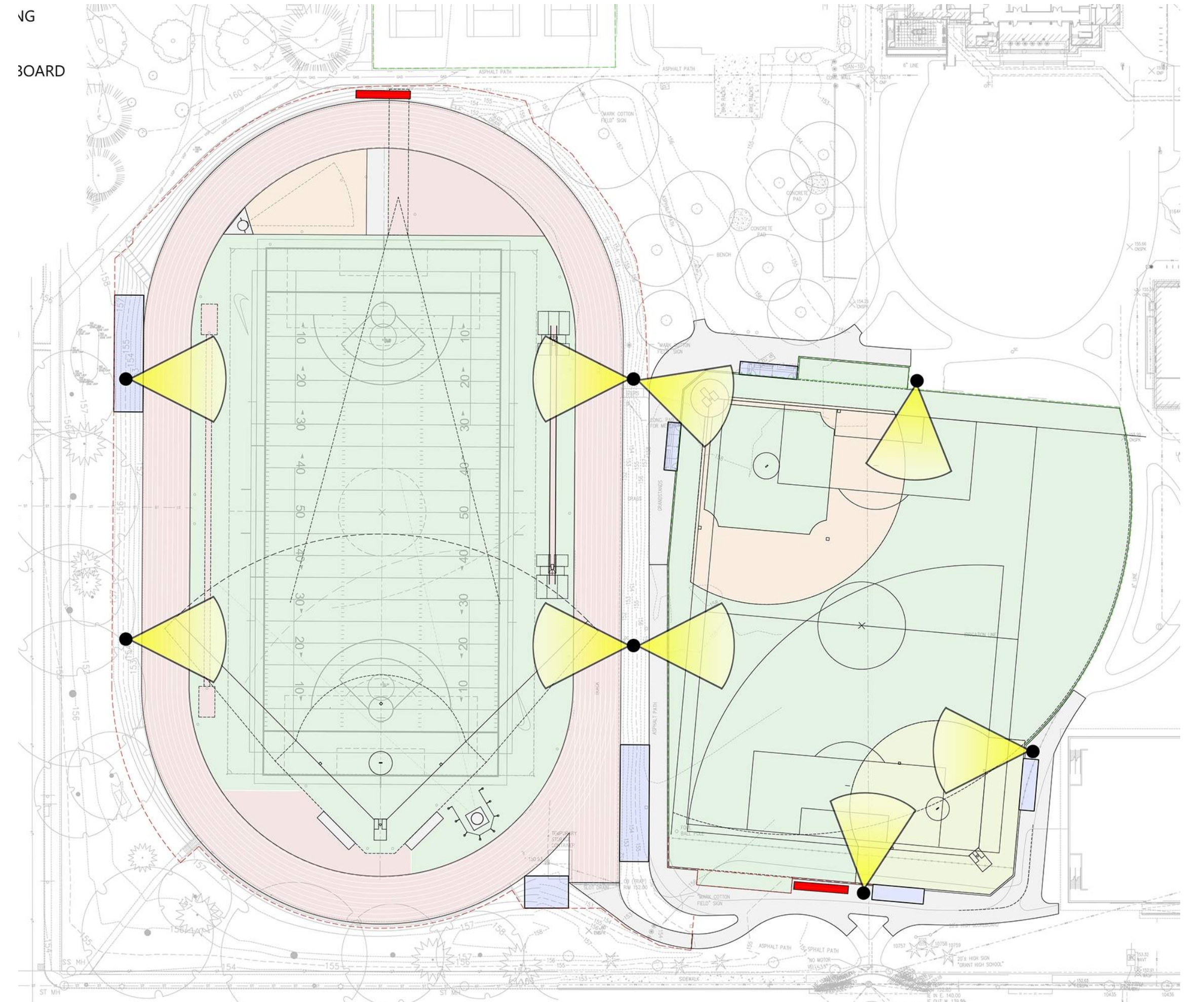
OPTION B



# LIGHTING & SCOREBOARDS



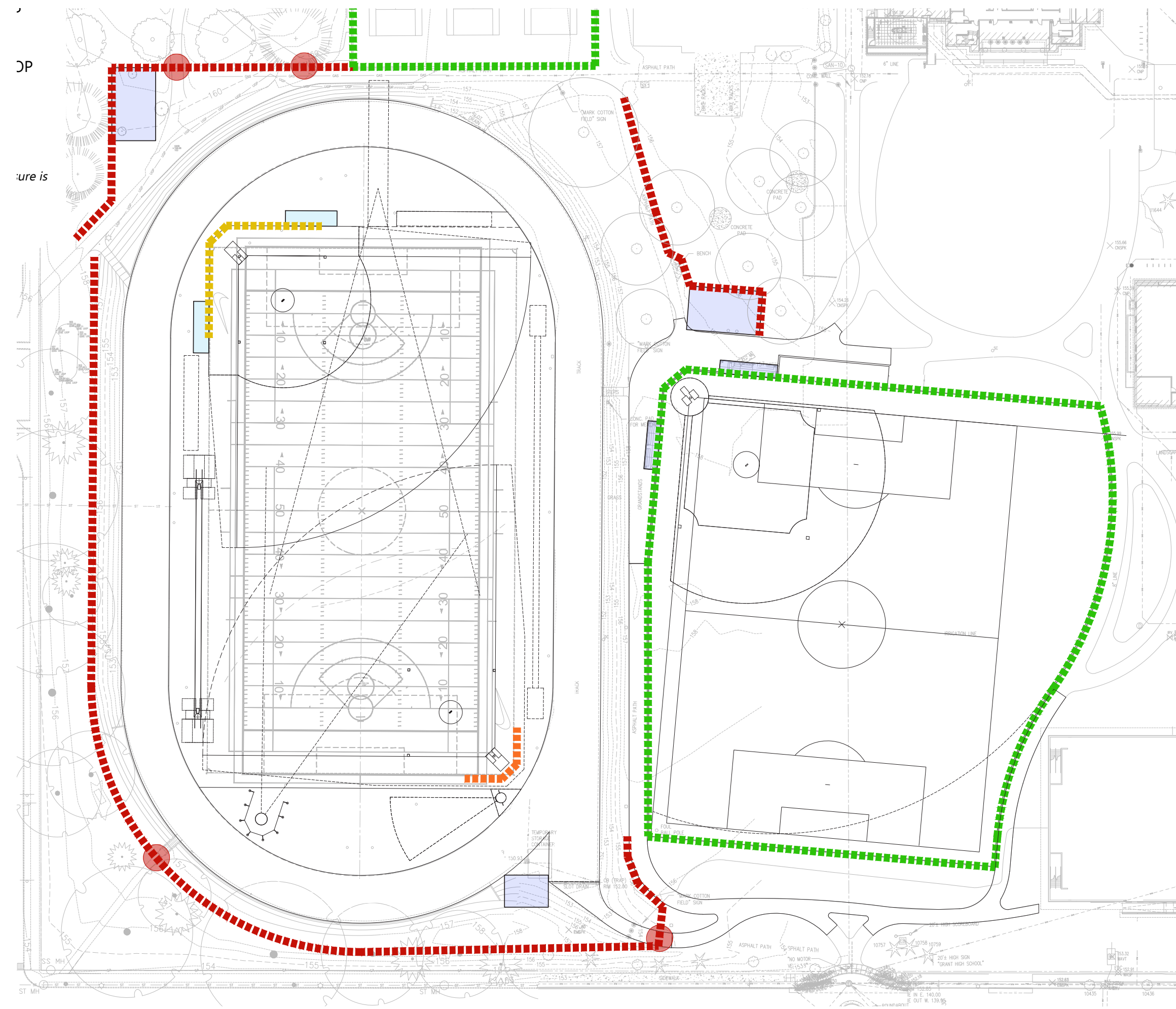
OPTION A



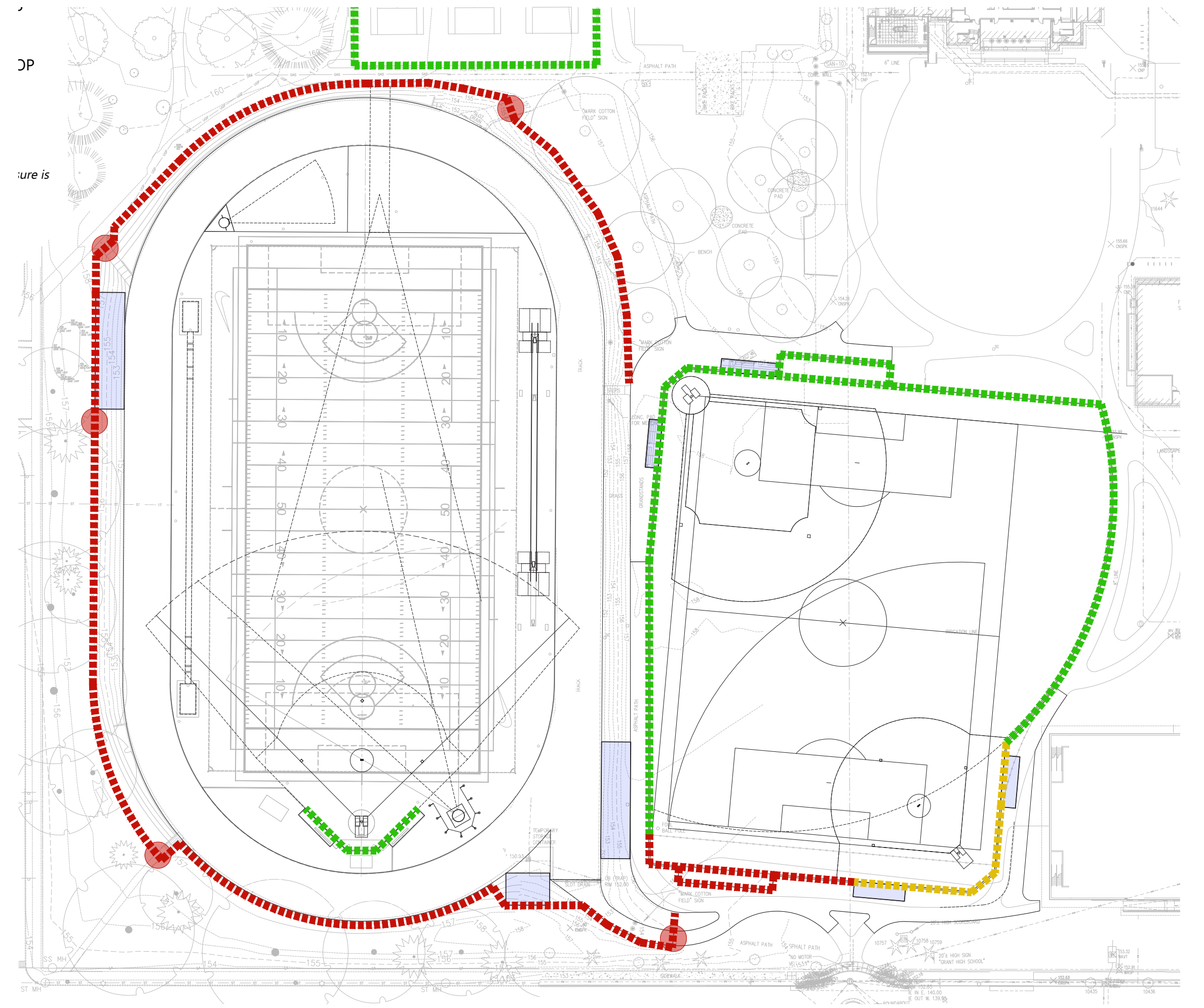
OPTION B



# ACCESS & SECURITY



OPTION A



OPTION B



# AERIAL VIEW





# WEST GRANDSTAND





# EAST GRANDSTAND





# LOOKING WEST





LOOKING EAST FROM THOMPSON ST





LOOKING SOUTHEAST ALONG 33<sup>RD</sup>





# LOOKING EAST





Thank You